

## USB Cable Installation for Windows XP

You must have administrator privileges for the installation.

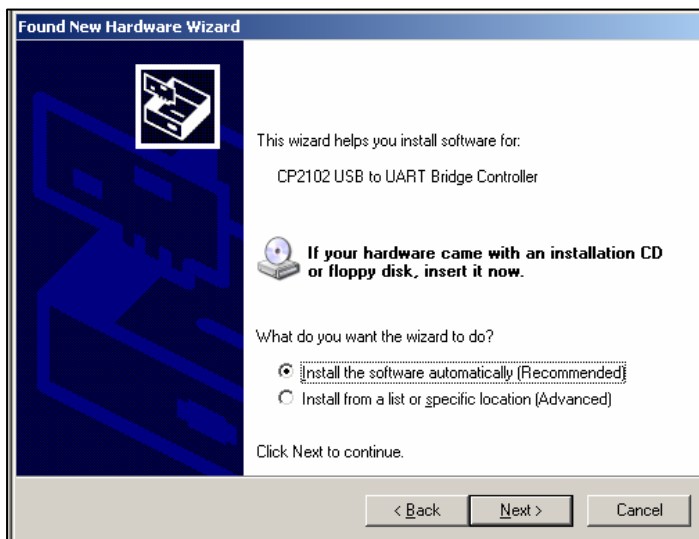
1. Plug your USB cable **with the aXbo-Logo** into your computer and wait briefly for a window (Diagram 1 or 2 below) to appear:



**Note:** If no window corresponding to Diagram 1 or 2 automatically appears, you must manually install the driver (go to Step 6).

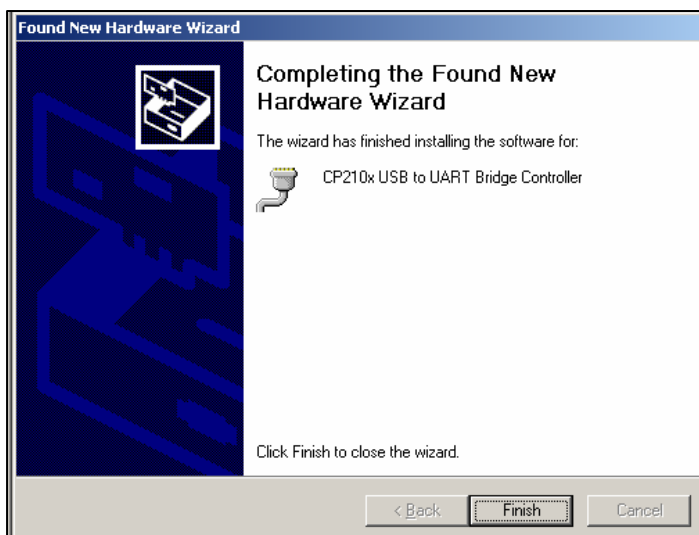
**2a.** This window may appear. Select the option "Yes, this time only" and click on "Next >".

(Diagram 1)



**2b.** In order to continue the installation, click on "Next >".

(Diagram 2)



After installation of the "USB Composite Device" has been completed, the following window will appear:

**3.** Click on "Finish" to complete this step of the installation.

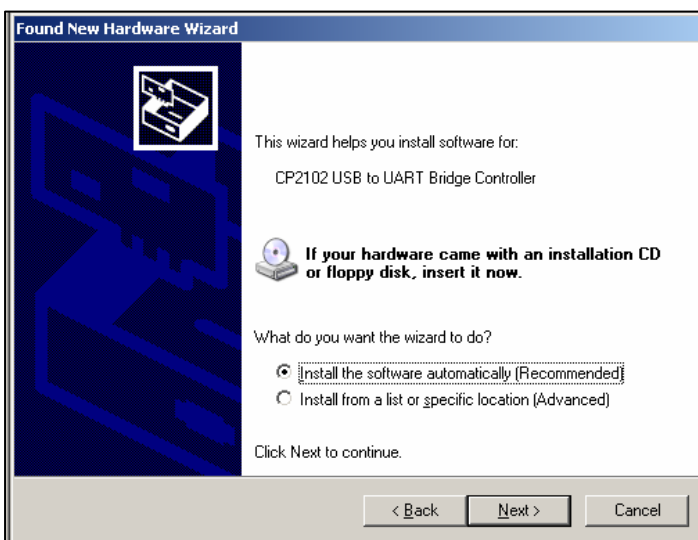
(Diagram 3)



**4a.** The following window may appear once again. Select the option "Yes, this time only" again and click on "Next >".

**Note:** If no window corresponding to Diagram 4 or 5 automatically appears, you must manually install the driver (go to Step 6).

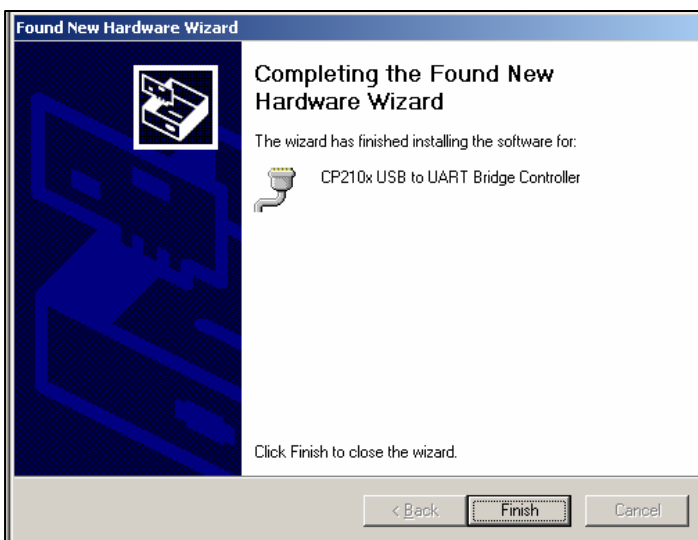
(Diagram 4)



The following window will again appear:

**4b.** Click again on "Next >" to install additional required components.

(Diagram 5)



After installation of "USB to UART Bridge Controllers" has been completed, the following window will appear:

**5.** Click on "Finish" to complete the installation.

**The confirmation in this window means you have successfully installed your aXbo USB cable.**

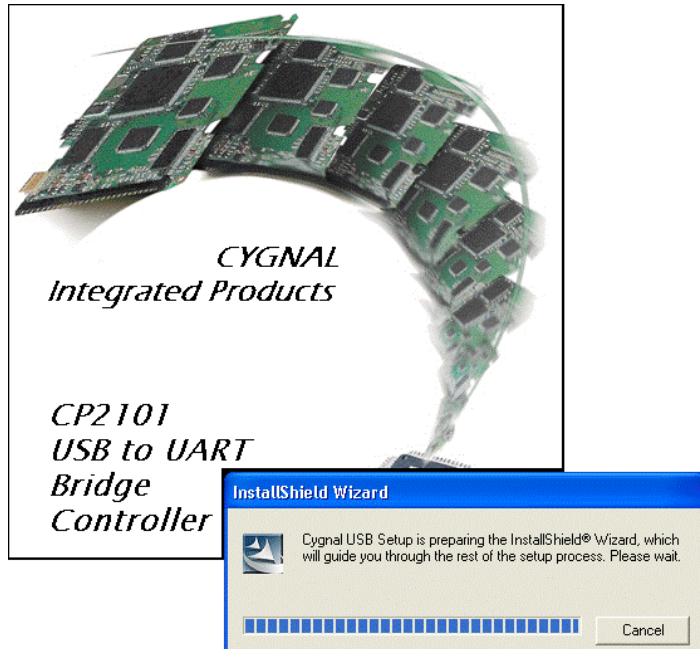
Now you may regularly transmit and analyze your sleep data on your computer (aXbo research).

(Diagram 6)

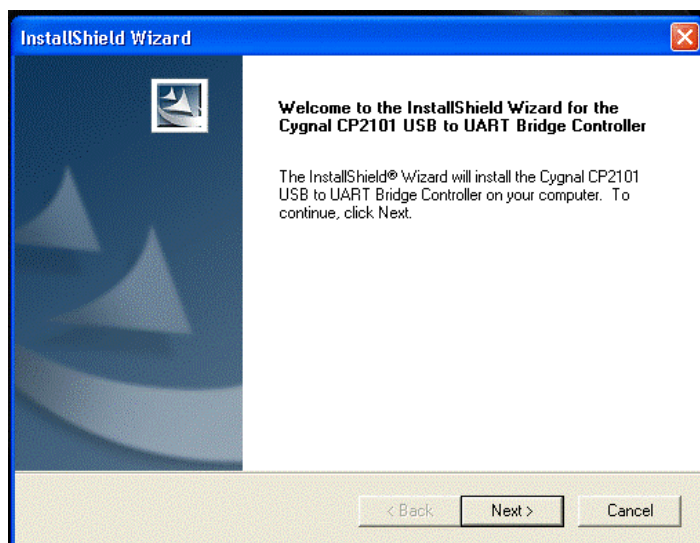
## Manual Driver Installation

**Note:** Steps 6 - 10 are only necessary if the automatic installation as outlined in Steps 1 - 5 could not be successfully completed.

Please note that the following descriptions and snapshots can be displayed in a different way depending on the driver you will install.

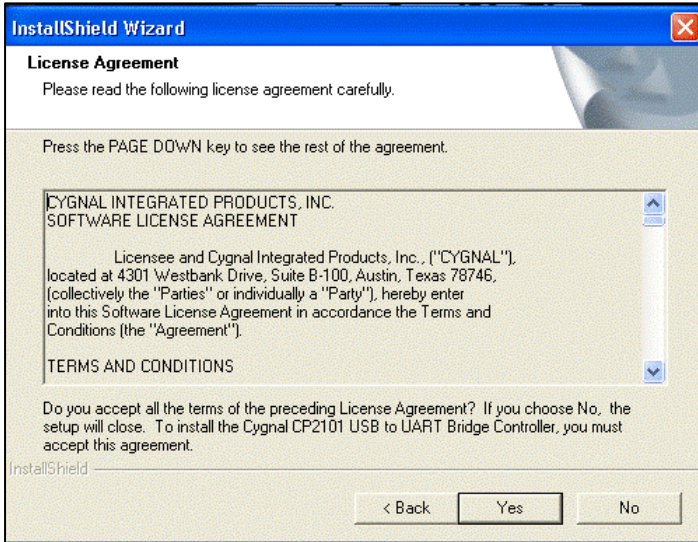


6. Following the instructions found on our website, download the file CP210x\_VCP\_Win2K\_XP\_S2K3\_Vista\_5-3.zip. Open the file and click on the application CP210x\_VCP\_Win2K\_XP\_S2K3\_Vista\_5-3.exe – then the following window will appear automatically:



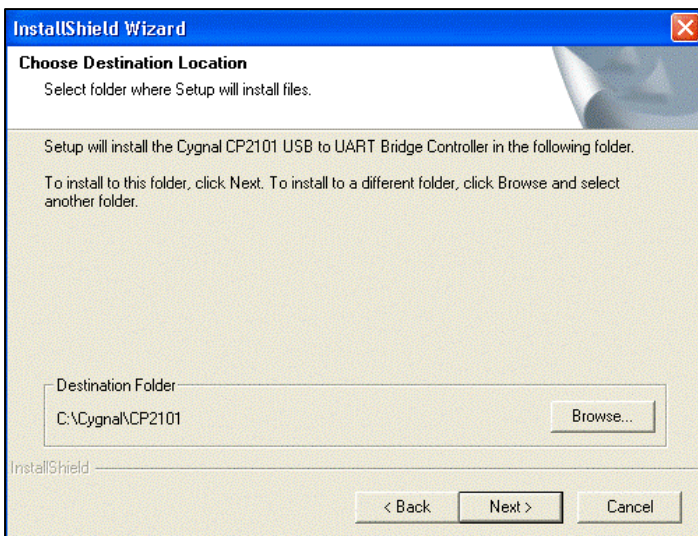
7. Click on "Next >" to begin the installation.

(Diagram 7)



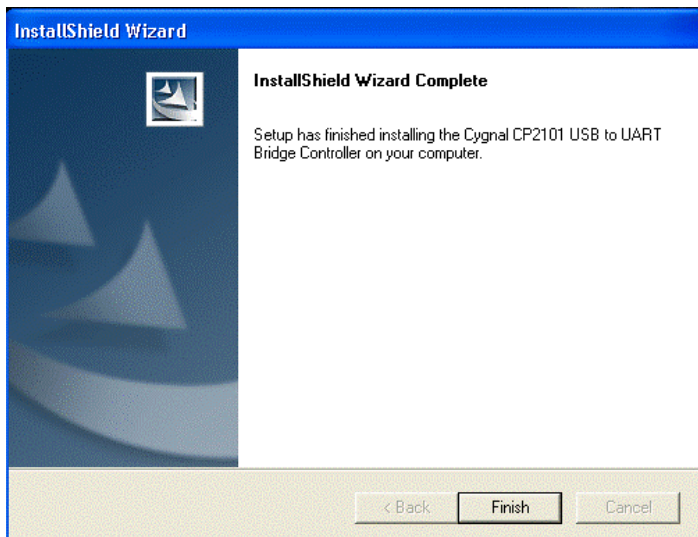
8. Read the terms and confirm your agreement with "Yes".

(Diagram 8)



9. Default installation of the driver is to the director "Cygnal". Click on "Browse..." to select another specific location for installation.

(Diagram 9)

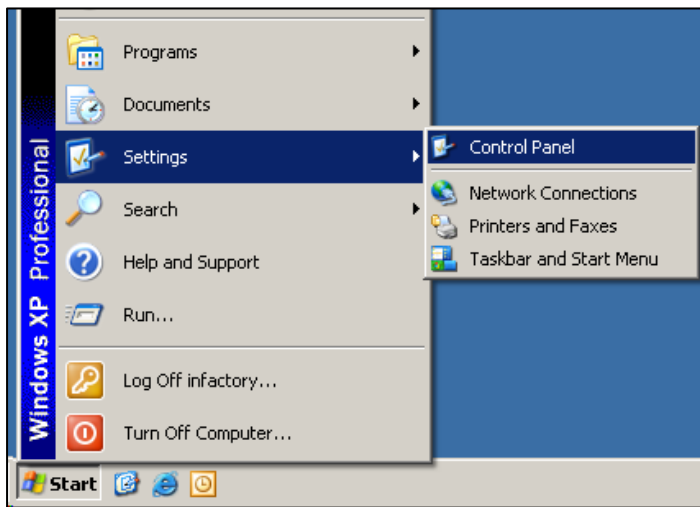


10. Click on "Finish" to complete installation.

**The confirmation in this window means you have successfully installed your aXbo USB cable.**

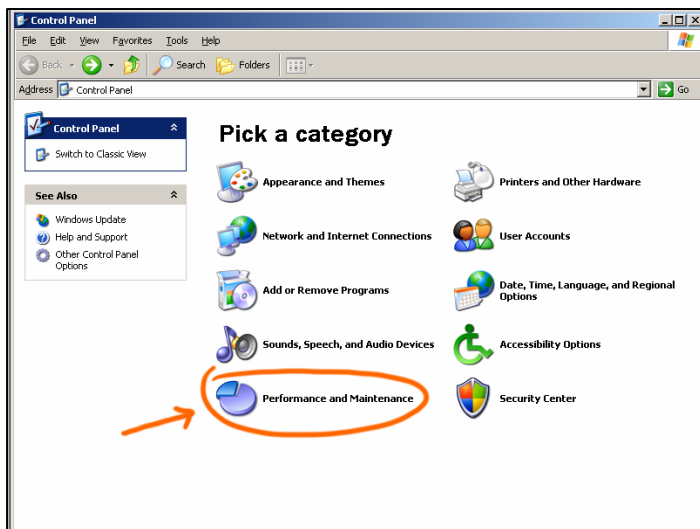
(Diagram 10)

# Troubleshooting: Monitoring the USB cable installation and readout of COM ports for aXbo research



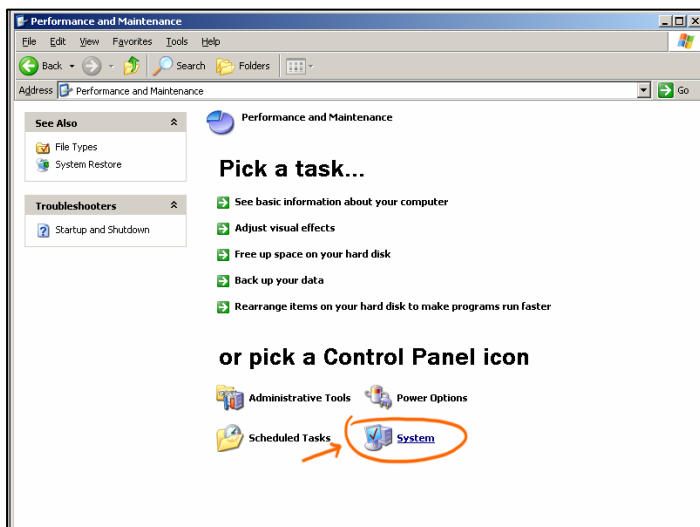
11. Click on Start / Settings / Control Panel.

(Diagram 11)



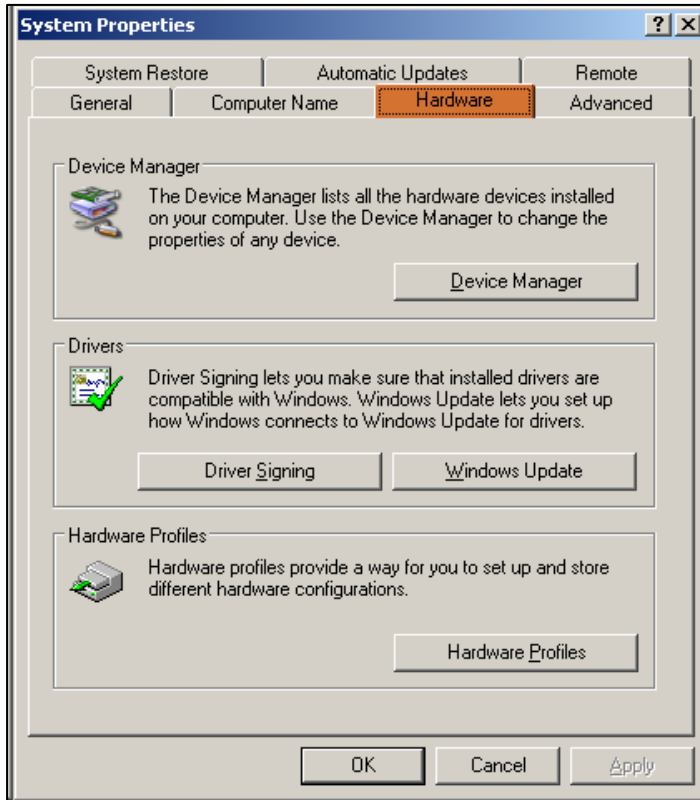
12. Select "Performance and Maintenance".

(Diagram 12)



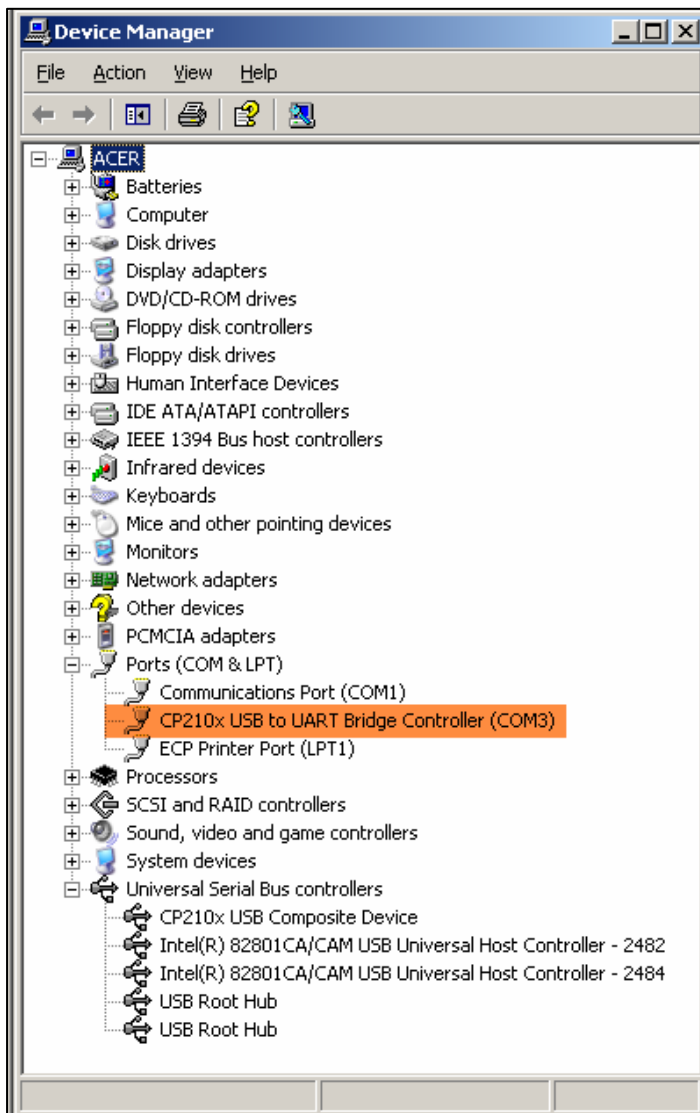
13. Select "System".

(Diagram 13)



14. Select the tab "Hardware" and click on the "Device Manager" button.

(Diagram 14)



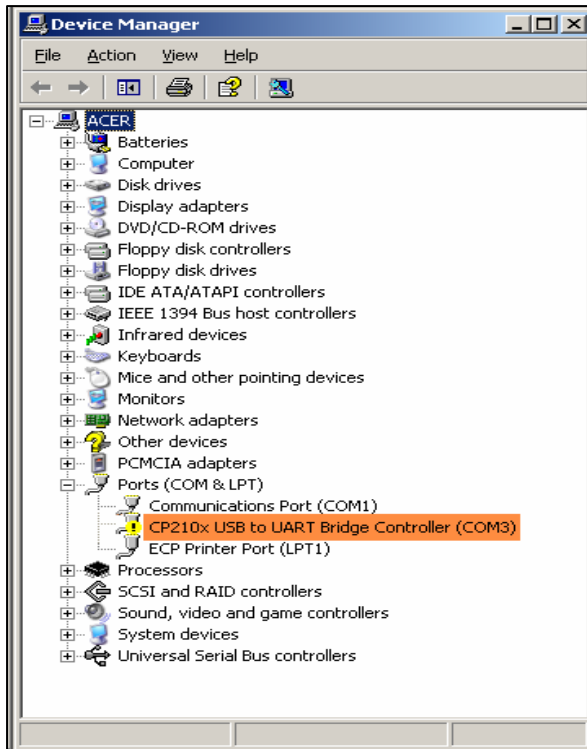
15. Under Ports (COM and LPT) the successful installation of "CP210x USB to UART Bridge Controller (COM X)" can be seen.

**Note:** if the port "CP210x USB to UART Bridge Controller (COM X)" features a yellow exclamation point, then please continue with Step 16.

**Note:** Write the number (COMX) after the COM name (in this case COM3) because you may need this for research settings.

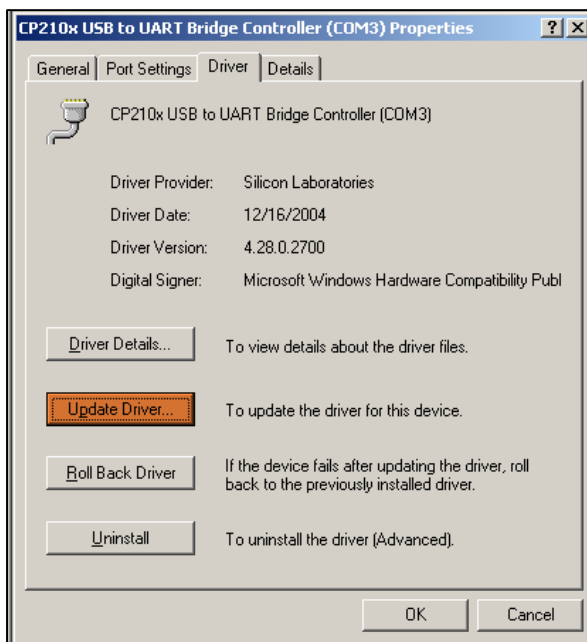
(Diagram 15)

**Note:** Only proceed with Step 16 if there is a yellow exclamation point under ports or USB monitor.



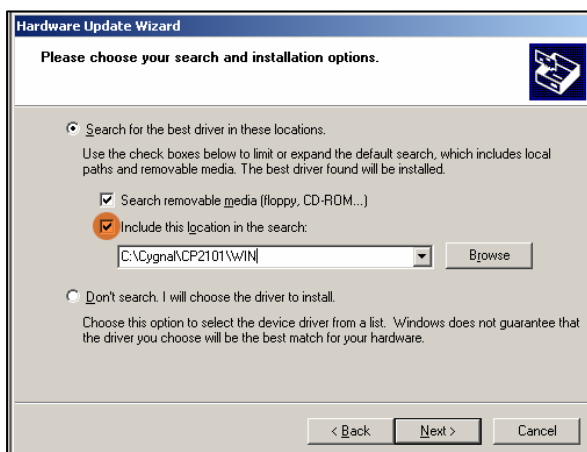
**16.** With the right mouse button click on "CP210x USB to UART Bridge Controller (COM X)" or on "CP210x USB Composite Device" and then on "Properties".

(Diagram 16)



**17.** Select the tab "Driver" and then click on the button "Update . . .".

(Diagram 17)



**18.** Select "Include these locations in the search" by making a check and then click the button "Search". Select the directory "C:\Cygnal\CP2101\WIN" (or the one you selected in Step 9) and then click on "Next >".

**The confirmation in this window means you have successfully installed your aXbo USB cable.**

(Diagram 18)